



EASY MAINTENANCE



STEERING AXLE



**ABILITY  
COMPETENCE  
PASSION**



ENGINE COMPARTMENT



ENGINE COMPARTMENT



FTMH

**FORK LIFT**



- Mod. FT 20 H6
- Mod. FT 20 H6 DB
- Mod. FT 22 H7
- Mod. FT 25 H7
- Mod. FT 25 H7 DB
- Mod. FT 25 H8
- Mod. FT 25 H8 DB



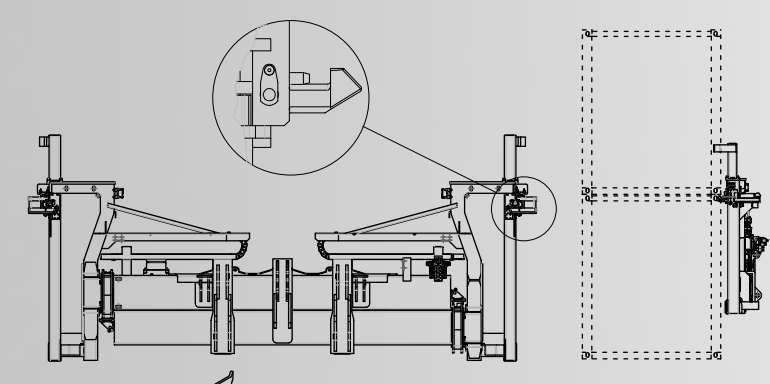
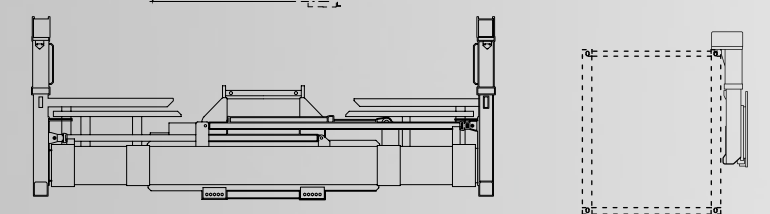
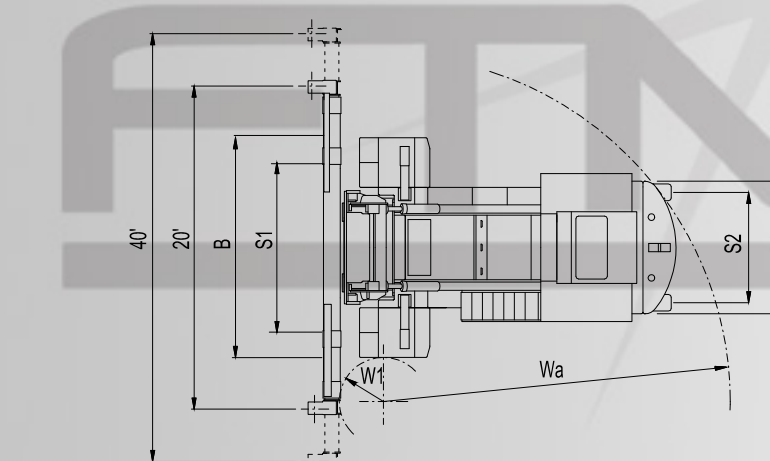
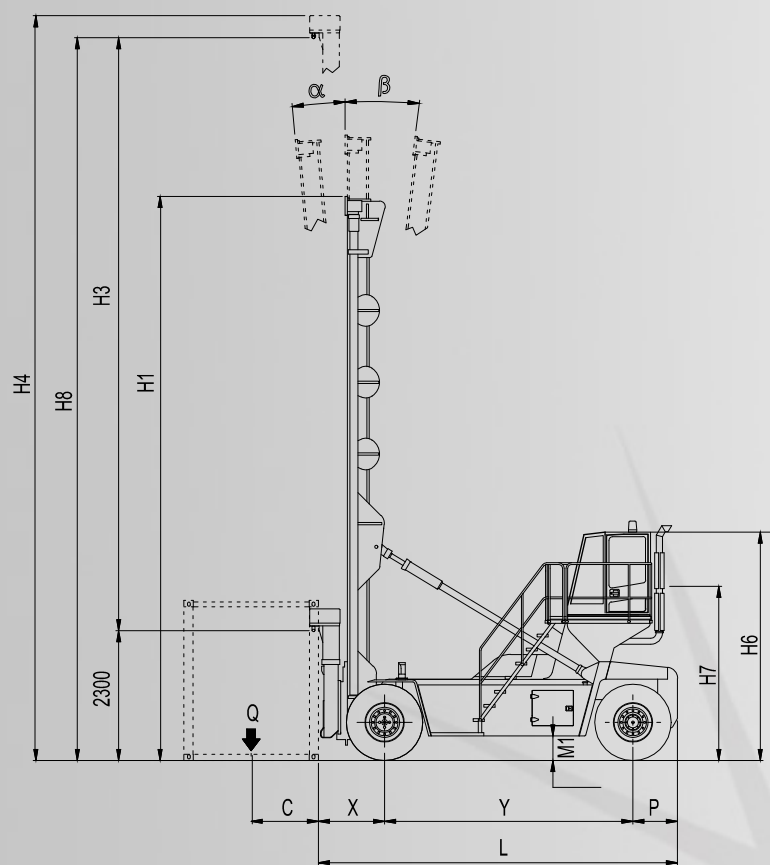
**FANTUZZI TEAM MATERIAL HANDLING S.r.l.**  
Via Galileo Galilei, 13 - I-42041 Brescello (RE) Italy  
Mob. + 39 342 8548144 - Ph. N. + 39 0522 480625 - Fax N. + 39 0522 480160  
ottavio.artoni@ftmh.it - www.ftmh.it  
P.IVA CF 02618470351



**FANTUZZI TEAM MATERIAL HANDLING S.r.l.**  
Via Galileo Galilei, 13 - I-42041 Brescello (RE) Italy  
Mob. + 39 342 8548144 - Ph. N. + 39 0522 480625 - Fax N. + 39 0522 480160  
ottavio.artoni@ftmh.it - www.ftmh.it  
P.IVA CF 02618470351



# DIMENSIONS



# Denomination

|    |   |      | FTMH   | FTMH        | FTMH                           | FTMH         | FTMH        | FTMH                     | FTMH                        |          |
|----|---|------|--|-------------|--------------------------------|--------------|-------------|--------------------------|-----------------------------|----------|
|    |   |      | FT 20 H6   | FT 20 H6 DB | FT 22-H7 (7x9'6")              | FT 25 H7     | FT 25 H7 DB | FT 25 H8                 | FT 25 H8 DB                 |          |
| 1  | Manufacturer  |      |  |             |                                |              |             |                          |                             |          |
| 2  | Model   |      |  |             |                                |              |             |                          |                             |          |
| 3  | Capacity  | Q    | Nominal/Under Spreader                               | Kg          | 8000                           | 9000         | 8000        | 9000                     | 10000                       |          |
| 4  | Load Centre   | C    | Distance   | mm          | 1200                           | 1200         | 1200        | 1225                     | 1225                        |          |
| 5  | Motive Power  |      |  |             | Diesel                         | Diesel       | Diesel      | Diesel                   | Diesel                      |          |
| 6  | Driver Position   |      |  |             | Seated                         | Seated       | Seated      | Seated                   | Seated                      |          |
| 7  | Tyres   |      | Pneum (solid as option)                              | F/R         | PNEUMATIC                      | PNEUMATIC    | PNEUMATIC   | PNEUMATIC                | PNEUMATIC                   |          |
| 8  | Wheels  |      | Number   | F/R         | 4/2                            | 4/2          | 4/2         | 4/2                      | 4/2                         |          |
| 9  | Lift  | h3   | Height   | mm          | 14100                          | 14100        | 18400       | 16500                    | 19100                       |          |
| 10 |   | h2   | Free Lift (option)                                   | mm          | -                              | -            | -           | -                        | -                           |          |
| 11 | Duplex mast   | h8   | Lift Under Twist - Locks or Hooks (8' 6" conts high) | mm          | 16400                          | 16400        | 20700       | 18800                    | 21400                       |          |
| 12 | Carriage  |      | Type   |             | INTEGRAL                       | INTEGRAL     | INTEGRAL    | INTEGRAL                 | INTEGRAL                    |          |
|    | Spreader with twist locks OR with hooks and side clamps |      | Type   |             | SIDE                           | SIDE         | SIDE        | SIDE                     | SIDE                        |          |
|    |   |      | Telescopic 20' - 40'                                 |             | yes                            | yes          | YES         | yes                      | yes                         |          |
|    |   |      | Self-levelling or hydraulic side sloping             |             | Self-lev.                      | Side-sloping | Self-lev.   | Side-sloping             | Self-lev.                   |          |
|    |   |      | Sideshift R-L  | mm          | 600R-600L                      | 350R-350L    | 600R-600L   | 600R-600L                | 350R-350L                   |          |
| 13 | Tilt  |      | Forward/Reverse                                      | a/b         | 3/6                            | 3/6          | 3/6         | 3/6                      | 3/6                         |          |
| 14 | Dimensions  | L    | Length   | mm          | 6100                           | 6100         | 6100        | 6400                     | 6450                        |          |
| 15 |   | B/B1 | Width Front - Rear                                   | mm          | 4000/2400                      | 4000/2400    | 4000/2400   | 4200/2500                | 4500/2500                   |          |
| 16 |   | h1   | Closed Mast Height                                   | mm          | 9000                           | 9000         | 11150       | 10100                    | 11400                       |          |
| 17 |   | h4   | Open Mast - Mast Height                              | mm          | 16200                          | 16200        | 20650       | 18600                    | 21200                       |          |
| 18 |   | h6   | Cabin Height   | mm          | 3700                           | 3750         | 3750        | 4200                     | 4200                        |          |
| 19 |   | h7   | Seat Height  | mm          | 2600                           | 2650         | 2650        | 3000                     | 3000                        |          |
| 20 |   | P    | Rear overhang  | mm          | 950                            | 950          | 950         | 1290                     | 1290                        |          |
| 21 | Turning Radius  | W/Wa | Internal/External                                    | mm          | 1100/5800                      | 1100/5800    | 1100/5800   | 1100/6100                | 1100/6100                   |          |
| 22 | Steering  |      | Hydraulic - Servo assisted                           |             | OSCILLATING                    |              |             | AXLE WITH                | SINGLE                      | CYLINDER |
| 23 | Drive axle  |      | Rigid with hub reduction                             | mod         | D81                            | D81          | D81         | D81                      | D91                         |          |
| 24 | Distance from front axle centre to load                 | X    |  | mm          | 1050                           | 1100         | 1050        | 1100                     | 1050                        |          |
| 25 | Speed   |      | Travel with/without Load                             | Km/h        | 24/25                          | 25/25        | 25/25       | 25/26                    | 25/26                       |          |
| 26 |   |      | Lift with/without Load                               | m/s         | 0,55/0,57                      | 0,55/0,57    | 0,55/0,57   | 0,55/0,57                | 0,55/0,57                   |          |
| 27 |   |      | Lowering with/without Load                           | m/s         | 0,54/0,52                      | 0,54/0,52    | 0,54/0,52   | 0,54/0,52                | 0,54/0,52                   |          |
| 28 | Max. drawbar pull                                       |      | Loaded   | daN         | 16000                          | 16000        | 16000       | 16000                    | 16000                       |          |
| 29 | Max. gradient   |      | Loaded   | %           | 30                             | 30           | 30          | 30                       | 30                          |          |
| 30 | Weight  |      | Without Load (spreader included)                     | Kg          | 31500                          | 32500        | 35000       | 39500                    | 41000                       |          |
| 31 | Axle loads  |      | With Load  | F/R         | Kg                             | 32700/6800   | 34500/7000  | 35000/8000               | 39000/9500                  |          |
| 32 |   |      | Without Load   | F/R         | Kg                             | 20000/11500  | 20000/12500 | 23000/12000              | 25500/14000                 |          |
| 33 | Tyres   |      | Number   | F/R         | 4/2                            | 4/2          | 4/2         | 4/2                      | 4/2                         |          |
| 34 |   |      | Size Front   |             | 12.00-20                       | 12.00-24     | 12.00-24    | 14.00-24                 | 14.00-24                    |          |
| 35 |   |      | Size Rear  |             | 12.00-20                       | 12.00-24     | 12.00-24    | 14.00-24                 | 14.00-24                    |          |
| 36 |   |      | Inflation / ground pressure                          | Bar         | 10/9                           | 10/9         | 10/9        | 10/9                     | 10/9                        |          |
| 37 | Wheel base  | y    |  | mm          | 4200                           | 4200         | 4200        | 4500                     | 4500                        |          |
| 38 | Track   | F/R  | S1-S2  | Track       | F/R                            | mm           | 3100/2100   | 3100/2100                | 3100/2100                   |          |
| 39 | Ground Clearance  |      | With Load lowest point                               | mm          | 280                            | 330          | 330         | 350                      | 350                         |          |
| 40 | Service Brakes  |      | FRONT AXLE   |             | WET DISC                       |              |             | BRAKES                   | HYDRAULIC                   |          |
| 41 | Parking Brakes  |      | MECHANIC   |             | DRY DISC                       |              |             | OPERATED                 |                             |          |
| 42 | Batteries   |      | VOLTAGE/CAPACITY                                     | V/Ah        | 24/160                         | 24/160       | 24/160      | 24/160                   | 24/160                      |          |
| 43 | Engine  |      | Manufacturer/Type (stage 4 Final)                    |             | CUMMINS                        |              |             | QSB 6,7                  | TURBOCHARGED - STEP 4 FINAL |          |
| 44 |   |      | Power  | Kw/CV       | 168/225                        | 168/225      | 168/225     | 168/225                  | 186/250                     |          |
| 45 |   |      | Number Revolutions                                   | Rpm         | 2200                           | 2200         | 2200        | 2200                     | 2200                        |          |
| 46 |   |      | Number of Cylinders/Diplacements                     | Cm³         | 6/6700                         | 6/6700       | 6/6700      | 6/6700                   | 6/6700                      |          |
| 47 |   |      | Peak Torque  | Nm/Rpm      | 949/1500                       | 949/1500     | 949/1500    | 949/1500                 | 987/1500                    |          |
| 48 |   |      | Fuel Consumption (AVE)                               | l/h         | 13                             | 13           | 13          | 13                       | 13                          |          |
| 49 | Gearbox   |      | Makes  |             | DANA - CLARK MOD 32000         |              |             |                          |                             |          |
| 50 | Transmission  |      | Type   |             | HYDRODINAMIC                   |              | WITH TORQUE | CONVERTER                |                             |          |
| 51 | Clutch  |      | Type   |             | POWER SHIFT                    |              |             |                          |                             |          |
| 52 | Gear  |      | Forward / Reverse                                    | Nº          | 4/4                            | 4/4          | 4/4         | 4/4                      | 4/4                         |          |
| 53 | Hydraulic oil cooling system                            |      |  | yes         | yes                            | yes          | yes         | yes                      | yes                         |          |
| 54 | Hydraulic Pressure                                      |      | Working  | Bars        | 220                            | 220          | 220         | 240                      | 240                         |          |
| 55 | Tanks capacity  |      | Hydraulic oil  | L           | 420                            | 420          | 420         | 550                      | 550                         |          |
| 56 |   |      | Fuel Diesel  | L           | 360                            | 360          | 360         | 400                      | 400                         |          |
| 57 |   |      | Ad. blue   | L           | 19                             | 19           | 19          | 19                       | 19                          |          |
| 58 | Cabin configuration                                     |      |  |             | FIXED ON THE REAR LOW POSITION |              |             |                          |                             |          |
| 59 | Controls  |      | Sensitive Joystick                                   | yes         | yes                            | yes          | yes         | yes                      | yes                         |          |
| 60 | Noise level   |      | Outside/inside cabin                                 | dB(A)       | 82/72                          | 82/72        | 82/72       | 82/72                    | 82/72                       |          |
| 61 | Stability factor  |      | Static with vertical mast                            |             | 2,68                           | 2,59         | 2,8         | 3,00                     | 2,81                        |          |
|    |   |      | ALTERNATIVE ENGINE                                   |             |                                |              |             | ALTERNATIVE TRANSMISSION |                             |          |
|    |   |      | Cummins QSB 6,7 (164 Kw) Stage Tier 3A               |             |                                |              |             | ZF 3WG 211               |                             |          |
|    |   |      | Volvo TAD 720 VE (174 Kw) Stage Tier 2               |             |                                |              |             |                          |                             |          |
|    |   |      | Volvo TAD 870 VE (160 Kw) Stage Tier 4               |             |                                |              |             |                          |                             |          |

# OUR STRONG POINTS

**FRONT TELESCOPIC SPREADER WITH TWIST LOSCKS**

- Double boom design with cylinders for positioning 20' 40' containers placed outside the structure to facilitate service and substitution.
- Nr. 2 floating Twist locks
- Sliding heads to facilitate container handling
- High quality steel 355J2G3
- Mechanic and electric safeties
- Led working lights
- Large hole for twist lock service access.
- Upright plate easy mounting and disassembling.

**FRONT TELESCOPIC SPREADER WITH FIXED HOOKS**

- Double boom design with cylinders for positioning 20' 40' containers placed outside the structure to facilitate repairation and substitution.
- Nr. 2 fixed hooks of 6 Ton capacity each for safe handling of 2 containers of 20' and 40'.
- Nr. 2 hydraulic control clamps for safe coupling of 2 containers.
- Mobile heads with large hole to consent visibility to the hooks at every height.
- High quality steel 355J2G3
- Mechanic and electric safeties
- Led working lights
- Large hole for hooks and camps service access.
- Upright plate easy mounting and disassembling.
- Side sloping +/-3° with two cylinders

**CAB**

- Fixed, raised and back placed
- All around great visibility
- High comfort with pneumatic and adjustable seat
- Adjustable steering wheel column
- Secondary seat for passenger
- Air-recycling and particle filter system
- Two access doors
- Easy access to the cab through comfortable stairs frame and anti-slippery steps.
- Tempered side and back windows (all movable) and stratified type on the front and roof of cab.
- Electric-hydraulic Joystick with "DEAD-MAN" security system positioned on the armrest.

**MAST**

- H profile design for heavy duties
- High quality steel: S355J2G3
- Side positioned lifting cylinders for greater visibility
- Centralized and efficient greasing system
- 2 complete full filling sliding rollers positioned on the fixed mast and 2 complete full filling sliding rollers positioned on the mobile mast, distancing each other through lifting height for a better distribution of load charge.
- Upper, down and side pads made of special "NYLATRON" long life and easily dismantling for service.
- The Spreader carriage is fixed through 4 sliding rollers and Nylatron pads, while the counter-plate helps a faster mounting of the single or double container Spreader
- Chains are Rex Regina BL1266 and SS3288

**HYDRAULIC SYSTEM**

- Nr.2 PARKER (USA) double gear pumps
- The 2 bigger pumps are dedicated to lifting, tilt and spreader functions .
- The 2 smaller pumps are dedicated to steering, breaks and hydraulic oil cooling functions.
- Nr. 1 Double hydraulic distributor made Walvoil, connected in series and in parallel for an optimized use of the engine's power with reduction of fuel consumption and increase of forklift performance.
- Efficient Oil cooling system with big radiator and hydraulic motor to control the fan (electric motor for low temperature environment available as option).
- Nr. 2 10 micron filters on return line
- Nr. 1 10micron filter on delivery line for brakes.
- Electro valves are made Parker/ RexRoth
- Steering system servo assisted
- Hydraulic hoses made Manuli and the fittings type GIC 36° (ORFS fittings on demand)
- All electro valves (except the parking brake ones) are all flanged, CE TOP made and easily available on the market.

**ELECTRIC AND ELECTRONIC SYSTEM**

- Tera 7 Display with CAN-Bus interface displays with all operating elements and all engine parameters/ gearbox and electric system.
- Vertical mount display for an optimized data reading.
- Data download through USB
- Easy maintenance with access code.
- Constant electric control with lights on the spreader and in the cab for all functions and safeties.
- Led working lights, for easier night operation and low energy consumption.
- Wiring suitable for all weather conditions (-40°/+55°)

# AVAILABLE OPTIONS

- Air conditioning
- Arctic package (-40°)
- Automatic greasing system
- Front or rear view cameras with cab monitor
- Spreader stop at 30°
- Safety Pin for 45° container handling, fixed under the spreader hook(see drawing)
- Hydraulic control 45° tilting cab
- "Eco power" device for low fuel consumption
- "Ralf bar" for cab and operator protection
- Solid tires and reinforced rims
- Parking control sensors

